



**Life Sciences
Center**

STRATEGIC IMPLEMENTATION PLAN 2026–2030

FOREWARD

With major contributions to Lithuania's strong history in biotechnology and the life sciences, the Life Sciences Center (LSC) of Vilnius University (VU), has a singular and powerful mission to further develop an ecosystem of life sciences at VU and Lithuania by conducting internationally competitive science and studies.

The Life Science Center ecosystem

Established in 2016, the founding goal for the LSC was to strengthen the University's research in biochemistry, biotechnology, molecular biology, genetics, neurobiology and related areas. On opening it provided a new home for the university's Faculty of Natural Sciences (Institute of Biosciences), together with two leading research institutes, the Institute of Biochemistry and the Institute of Biotechnology, with a joint aspiration to perform fundamental interdisciplinary research on diverse topics in the life sciences.

Driven by renowned Lithuanian scientist, VU LSC Distinguished Professor Virginijus Šikšnys, in 2021, the LSC set up the European Molecular Biology Laboratory (EMBL) Partnership Institute for Genome Editing Technologies, to develop and strengthen gene-editing technology, through a first in Lithuania model in which research group leaders are recruited through international competition.

LSC's unique concentration of interdisciplinary research and education enables LSC to deliver high-quality studies for all levels of students (Bachelors, Masters, PhD) with degrees that are globally recognised, and a current student population of nearly 1,300.

LSC staff and students are driven by inherent purpose to serve Lithuania by conducting excellent science and innovation and high-quality education and in doing so, contribute to global challenges such as human health and disease, climate change, environmental pollution, biodiversity loss and ecosystem degradation, one health questions and sustainable bioeconomy. In Vilnius, the LSC is an important player of a thriving life science ecosystem of research, education and industry, with LSC contributing expertise to national matters and is a vital source of highly skilled and well-trained scientists.

Rationale for a unified research strategy

With geopolitical instability continuing to grow, funding for scientific research even more competitive and the rapid rise of AI technologies, the LSC saw a demand to redefine its research directions.

The LSC strategic implementation plan for 2026-2030 serves to define a strong and united scientific vision and identity to bring the 3 institutes and the EMBL Partnership Institute together. The renewed research directions directly respond to current one health challenges, will help to increase competitiveness in Europe and increase LSC visibility within the international life science landscape.

The renewed strategic research directions as well as the implementation of the strategic plan for 2026-2030 will enable the LSC to achieve its vision to be among the leading life sciences centers in Europe and for the LSC to continue to be the leading institution in life science research and education in Lithuania.

Dr. Arvydas Lubys
LSC Director

LSC STRATEGY



VISION

To be among the leading life sciences centers in Europe.



MOTTO

Where Science meets
Your ambitions



MISSION

To further develop an ecosystem of life sciences at VU and Lithuania by conducting internationally competitive science and studies.



VALUES

- **Excellence in Science and Research Integrity**
- **Interdisciplinary and Innovative Thinking**
- **Academic Freedom and Ethical Responsibility**
- **Open, Inclusive and Highly Collaborative**

LSC value proposition

<h3>Students (Bachelor, Master, PhD)</h3> <ul style="list-style-type: none"> • Clear study-to-career pathways with strong international opportunities • Highly valued, internationally recognized degree • State-of-the-art research and laboratory infrastructure • Wide range of study topics and modern laboratory environments • Expert academic staff with strong research and teaching excellence • Strong focus on hands-on, practical and experimental skills • Active student engagement in research and scientific community life 	<h3>Employees</h3> <ul style="list-style-type: none"> • Strong opportunities for interdisciplinary and internal collaboration • Genuine academic freedom to pursue independent research directions • Excellent research infrastructure and highly motivated, talented students • An attractive, supportive, and intellectually stimulating academic environment • Opportunities to shape the field through recognized authority and leadership • Flexible work organization and adaptable schedules supporting research and teaching balance • A culture built on responsibility, integrity, and mutual trust within the institution
<h3>Research Community</h3> <ul style="list-style-type: none"> • Strong expertise and internationally recognized research excellence • Attractive, well-supported environment for high-impact research • Global authority and strong academic reputation • Leadership and competitiveness in securing talent, funding, and collaborations 	<h3>State / Policymakers</h3> <ul style="list-style-type: none"> • Prestige and trusted scientific authority • Proven impact of effective public investment in science • Attraction, retention, and return of top international and local talent
<h3>Business</h3> <ul style="list-style-type: none"> • Access to a highly skilled and industry-ready talent pipeline • Expert knowledge, advisory services, and R&D support • Commercially relevant research • Opportunities for continuous employee upskilling and reskilling 	<h3>Society</h3> <ul style="list-style-type: none"> • Evidence-based, reliable answers to key societal questions • Direct contribution to important societal goals and challenges • Strong authority, reputation, and public visibility

RESEARCH DIRECTIONS

Research at the LSC covers a wide variety of diverse fields in the life sciences as well as development of numerous experimental and computational technologies, with the most prominent being genome-editing technologies. In addition, the LSC plays an important role in Lithuania's biotechnology ecosystem, contributing to innovations in areas such as microfluidics, CRISPR-based molecular tools, data-driven bio-design, and advanced biotechnology.

To align research activities across LSC and facilitate stronger collaboration among groups and institutes, a comprehensive internal strategic review identified nine overarching research directions that serve as a unifying framework for the Centre's research portfolio. For each direction, a set of five-year aspirations was developed to guide future progress. The updated areas aim to strengthen LSC's scientific output, research quality, foster interdisciplinary working, and encourage sharing of ideas, infrastructure, and methodologies across research groups. These research directions will also support the development of collaborative projects, foster innovation, will help to attract national and European funding, and help recruit and train the next generation of researchers.

In 2026/2027 the LSC will launch a new competence center, the Translational Center for Gene Technology, to provide open and shared access to advanced equipment and technology expertise, to further enable cost-effective, high-quality research for LSC researchers, industry users and other academics.

The strategy aligns well with new opportunities created by the LitAI Artificial Intelligence Factory at Vilnius University, which will provide advanced computing infrastructure and enable the application of AI tools to complex biological research questions.

Human Health

Translational cell biology, cancer biology and drug discovery, neuroscience

Microbes & Viruses

Microbe-Virus Interactions and microbial adaptation

Biodiversity & Ecology

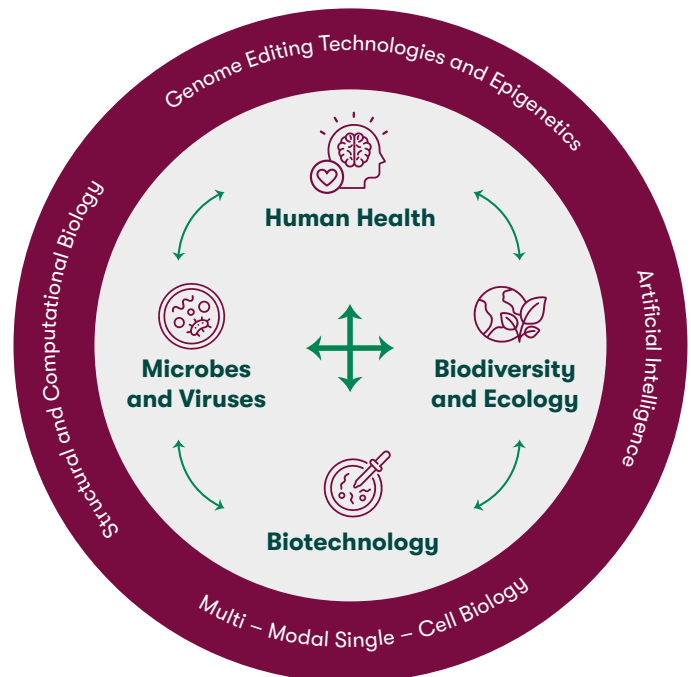
Ecology in changing environments

Biotechnology

Molecular biotechnology and biotechnological solutions

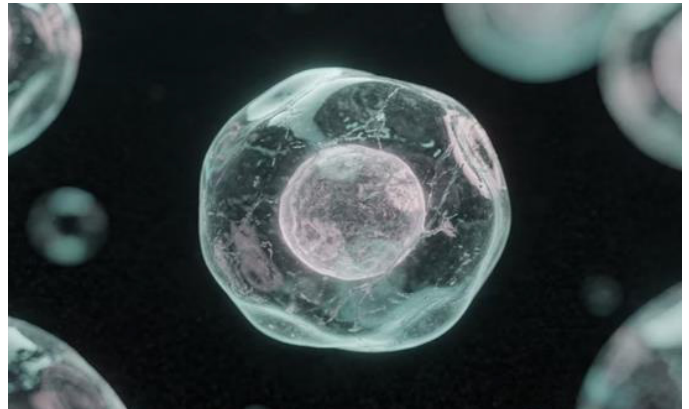
New Technology

Genome editing, Multi-modal Single- Cell Biology, Structural and Computational Biology, and AI



RESEARCH DIRECTIONS

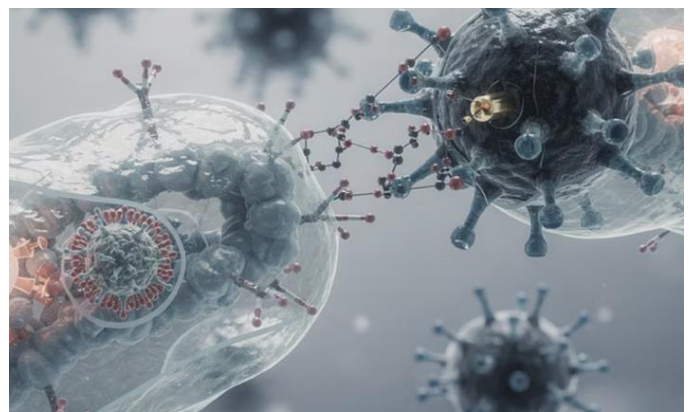
Future work in **Translational Cell Biology** will prioritise improving stem cell technologies, particularly more efficient iPSC generation and differentiation for regenerative applications. Research will also advance bioactive biomaterials, extracellular vesicle-based therapies, and sophisticated 3D cellular models to study tissue repair. Furthering immunology research, environmental immunotoxicity studies, and AI-supported data analysis will support translation of discoveries into innovative biomedical solutions.



Neuroscience research will emphasize integrating molecular, cellular, and systems-level research to better understand brain function, behaviour, and neurological disorders. Future directions include identifying biomarkers and mechanisms of brain diseases, clarifying how neural circuits generate cognition and behaviour, and studying nervous system development across the lifespan. The programme will expand model systems and implement AI-driven analytical tools and standardized datasets to enable large-scale, data-driven neuroscience research.

Microbe-Virus Interactions will focus on uncovering new bacterial antiviral defense and anti-defense systems and clarifying their molecular mechanisms through integrated biochemical, structural, and computational approaches. Expanding exploration of microbial virus diversity and poorly characterized viral proteins will reveal new host-virus interaction strategies. These insights will support the development of improved phage-based control of bacterial populations and enable discovery of novel molecular tools for medicine.

Cancer Biology and Drug Discovery will focus on strengthening a vertically integrated pipeline linking mechanisms, biomarkers, targets, and discovery of therapeutic molecules. Key priorities include developing clinically validated biomarker panels using multi-omics and AI, identifying vulnerabilities in epigenetic and signalling networks, and addressing therapy resistance. Mechanistic insights will guide rational drug design, repurposing, and targeted delivery strategies.



Microbial Adaptation and Disease Mechanisms aims to track microbial resistance evolution, uncover virulence mechanisms, and study pathogen adaptation within hosts. Emphasizing a One Health approach, it will enhance surveillance of antimicrobial resistance, foster interdisciplinary collaboration, and translate findings into clinical and environmental applications, strengthening regional and global microbial threat preparedness.

RESEARCH DIRECTIONS

Biodiversity and Ecology in Changing Environments research will integrate fieldwork, genomics, AI, and remote sensing to understand organismal adaptation and ecosystem resilience amid environmental change. Focus areas include genetic bases of stress tolerance, impacts of pollution, and biodiversity monitoring using cutting-edge molecular and ecological tools. Strengthening predictive modelling and long-term ecological research will position LSC as a regional leader in biodiversity science and conservation strategies.



Molecular Biotechnology will focus on designing and engineering efficient biocatalysts for sustainable, zero-waste industrial processes, advancing AI-driven protein and enzyme prediction, and optimizing recombinant protein and antibody production systems. Efforts will integrate high-throughput screening, structural biology, and VLP/liposomal delivery platforms to develop targeted diagnostics and therapies will position LSC as a global leader in biocatalysis, molecular tools, and applied biotechnology innovation.

Genome Editing aims to make (epi)genome editing fully programmable. Future directions focus on AI-guided delivery systems, orthogonal epigenetic writers, and tunable transcriptional control. By moving beyond sequence-based targeting, these approaches will enable precise, multi-dimensional gene and epigenetic regulation, advancing safe therapeutics, synthetic biology, and scalable biomanufacturing applications.



Structural and Computational Biology research will combine experimental biomolecular analysis, de novo protein design, and AI-driven modeling. Key future directions include FAIR dataset expansion, explainable machine learning, and integrative analysis across biomolecular structures and interactions, enabling breakthroughs in drug discovery, synthetic biology, and mechanistic understanding of complex biological systems.

Single-Cell Multi-Omics Biology and AI-Driven Inference will combine bespoke high-resolution assays with large-scale AI modeling. Future directions include capturing multi-layer molecular data, integrating cross-modality interactions with explainable AI, and translating insights into human health applications, enabling predictive understanding of cellular identity, disease mechanisms, and precision medicine innovation.

LSC STRATEGIC PRIORITIES

As an integral part of Vilnius University, LSC's strategic priorities, initiatives and KPIs for 2026-2030 cascade from and are tightly aligned with the Vilnius University Strategic Plan for 2026-2030.



RESEARCH

- Development of International Interdirectional Centers of Competence and Excellence
- Creation of a Science and Innovation Ecosystem
- Early-career researcher career development



STUDIES

- Development of studies in higher cycles
- Attraction of motivated applicants
- Consolidation of internationality and interdirectionality
- Individualized studies and mentoring



COMMUNITY AND ORGANIZATION

- Personnel policy for a competitive university
- Ensuring resilience
- Engaging environment
- Effective organization



SOCIETY

- University as the think tank for the resilience of Lithuanian society
- Responsible role in education
- Creation of a Science and Innovation Ecosystem



RESEARCH

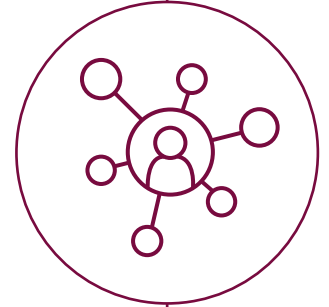


RESEARCH: BREAK-THROUGH DIRECTIONS

DEVELOPMENT OF INTERNATIONAL INTERDIRECTIONAL CENTERS OF COMPETENCE AND EXCELLENCE

WHY THIS MATTERS

LSC brings together internationally recognized research and studies under one roof, supported by state-of-the-art research infrastructure and a proven track record in establishing and advancing excellence centers. These centers have demonstrated their value in strengthening international collaboration and attracting both talents and competitive funding. At the same time, five years of experience in operating excellence centers has identified opportunities for improvement. Addressing these would support the expansion of the excellence and competence centres' network and enhance the effectiveness of their management and governance.



WHAT WE WILL DO

Core focus: strengthening and advancing centres of excellence

- Strengthen research, talent and funding management.
- Clarify the criteria for establishment of new centers of competence and excellence as well their operational model.
- Create a supportive framework that ensures the long-term sustainability and continued development of both existing and future centers.
- Foster interdisciplinary collaboration and knowledge exchange across LSC research directions.

EXPECTED IMPACT

These efforts will strengthen LSC's position as an internationally recognized life sciences ecosystem, enhance collaboration across research fields, increase competitiveness in attracting talent and funding, and accelerate the translation of scientific excellence into societal and economic value.

HOW SUCCESS WILL BE MEASURED

Objective	KPI
Number of operational CC and EC	4 centers
Attracted international funding	15M EUR
Number of submitted applications for the establishment of EC or CC	3 applications





RESEARCH: BREAK-THROUGH DIRECTIONS

CREATION OF SCIENCE AND INNOVATION ECOSYSTEM

WHY THIS MATTERS

LSC has strong research expertise, highly qualified specialists, and modern infrastructure that provide a solid foundation for strengthening collaboration with the life sciences industry and supporting the commercialization of developed know-how. To fully realize this potential, LSC aims to further develop its science and innovation ecosystem, generate greater added value through collaboration and services, and enhance the societal and economic impact of its research.



WHAT WE WILL DO

Core focus: enabling research-to-business translation

- Expand innovation support services to provide a clear and accessible entry point for business collaboration.
- Establish an innovative solutions prototyping laboratory to support the conversion of research ideas into market-ready products.
- Increase infrastructure accessibility to enable broader use by industry and startups.

EXPECTED IMPACT

These efforts will enable LSC to more effectively translate research excellence into economic and societal value, strengthen industry partnerships, and increase innovation outcomes.

HOW SUCCESS WILL BE MEASURED

Objective	KPI
Revenue from R&D services per researcher	2X growth compared to 2025 base
Number of startups	6 in total 2026 to 2030





RESEARCH: DIRECTION OF IMPROVEMENT

EARLY-CAREER RESEARCHER CARRER DEVELOPMENT

WHY THIS MATTERS

LSC offers attractive PhD studies and opportunities for young researchers, supported by modern infrastructure and an environment attractive to international talent. To further strengthen its position, LSC aims to enhance research space flexibility, increase international visibility, broaden global talent attraction efforts, and expand attractive funding opportunities for international applicants. Through these improvements, LSC seeks to reinforce its leadership in higher-cycle studies by becoming the most attractive choice in Lithuania and a competitive option internationally, offering clear value for career development and personal growth.



WHAT WE WILL DO

Core focus: building a strong and attractive system for young researchers

- Establish a structured and internationally competitive programme for young researchers with strong institutional support.
- Strengthen international mobility and attract foreign young researchers.
- Improve access to laboratory and office space for incoming talent to support recruitment and successful integration of researchers.
- Strengthen visibility and communication to promote LSC internationally.

EXPECTED IMPACT

These efforts will strengthen LSC's attractiveness for international early-career researchers, enhance research excellence, and cultivate the next generation of scientific leaders.

HOW SUCCESS WILL BE MEASURED

Objective	KPI
Number of postdoctoral fellows at LCS (annual level)	15 in 2026-2027 20 in 2028-2030
Targeted external funding, attracted for the implementation of individual postdoctoral internship projects	3M EUR





STUDIES



STUDIES: BREAK-THROUGH DIRECTIONS

DEVELOPMENT OF STUDIES IN HIGHER CYCLES

WHY THIS MATTERS

LSC offers a broad range of Doctoral and Master study programmes, strong research-based studies, and opportunities to develop scientific competencies in internationally recognized laboratories. Through its integrated research and education environment, LSC provides students with unique opportunities to engage in cutting-edge science and develop skills relevant to both academic and industry careers. Building on these strengths, LSC aims to further enhance the attractiveness, quality, and international visibility of higher-cycle studies, creating a seamless pathway for talent development and lifelong scientific growth.



WHAT WE WILL DO

Core focus: increasing attractiveness and quality of higher-cycle studies

- Develop a value-based Master’s model to further strengthen study quality, relevance, and student experience.
- Enhance doctoral training through structured support, mentorship, supervision, and quality assurance measures.
- Strengthen the attractiveness and visibility of second- and third-cycle studies through clear academic pathways and integrated learning opportunities across LSC.

EXPECTED IMPACT

These efforts will enhance the attractiveness and quality of higher-cycle studies, strengthen talent development pathways within LSC, increase international competitiveness, and better prepare graduates for successful careers in research, innovation, and industry.

HOW SUCCESS WILL BE MEASURED

Objective	KPI
Increase the number of Master’s students	10%
Doctoral student attrition	<5% per admission cycle
Doctoral student participation in project activities	>50% per year
Increase the number of graduates choosing another level of studies at LSC	20% compared to 2023–2025





STUDIES: IMPROVEMENT DIRECTIONS

ATTRACTION OF MOTIVATED APPLICANTS

WHY THIS MATTERS

LSC stands out through its strong practical training approach, active engagement with schools and communities, high-quality student intake, and low student drop-out rates. Building on these strengths, LSC is well-positioned to further enhance its visibility, strengthen its reputation among prospective students, and expand its reach both nationally and internationally.

By continuing to showcase the unique academic experience, close connection to industry, and vibrant socio-cultural environment, LSC aims to attract an even broader community of motivated and talented students from Lithuania and abroad. This will reinforce LSC's position as a preferred study destination, highlighting not only the academic excellence of studies, but also the rich student experience, international community, and vibrant cultural environment that shape personal and professional growth.



WHAT WE WILL DO

Core focus: strengthening positioning, communication, and targeted attraction

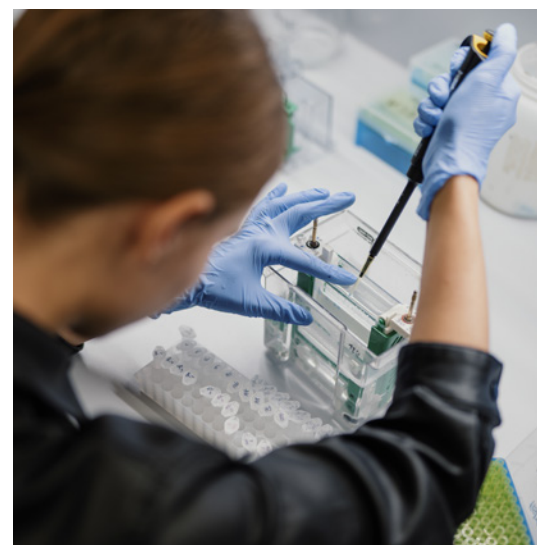
- Strengthen marketing and admissions approaches to clearly communicate LSC's unique value proposition, educational opportunities, and strengths.
- Expand international outreach and partnerships to attract high-potential students from diverse markets.
- Strengthen engagement with schools, educators, and talent development networks.
- Encourage progression to Master's studies through integrated academic pathways and enhanced student engagement.

EXPECTED IMPACT

These efforts will strengthen LSC's visibility and reputation, attract a broader pool of high-potential students, enhance student progression across study cycles, and build a stronger, more competitive talent pipeline for the future.

HOW SUCCESS WILL BE MEASURED

Objective	KPI
Share of international students out of all students in second - cycle studies	4.1% → 15%
The proportion of entrants demonstrating good learning outcomes out of all entrants	38% → 45%
Share of Vilnius University Academy for Young Scholars graduates who enrolled at LSC	>80%
Increase % of LSC bachelors who choose Master studies in LSC	10%





STUDIES: IMPROVEMENT DIRECTIONS

CONSOLIDATION OF INTERNATIONALITY AND INTERDIRECTIONALITY

WHY THIS MATTERS

LSC has strong experience in international student activities, successful international partnerships, and a growing culture of interdisciplinary collaboration. These strengths provide a solid foundation for further integrating international and interdisciplinary dimensions across studies, research, and student experiences.

Building on its established international network and academic excellence, LSC aims to further expand global engagement, strengthen interdisciplinary learning opportunities, and prepare students to thrive in an increasingly interconnected world. By fostering international perspectives and cross-disciplinary collaboration, LSC seeks to enhance the attractiveness of its study programmes, enrich the student experience, and strengthen its position within the international higher education landscape.



WHAT WE WILL DO

Core focus: expanding international experiences and interdisciplinary learning opportunities

- Expand international study opportunities through strategic partnerships, mobility initiatives, and visiting scholars.
- Strengthen the international dimension of study programmes and learning experiences.
- Develop interdisciplinary programmes and courses addressing global challenges and emerging societal needs.
- Enhance international engagement and talent attraction initiatives.

EXPECTED IMPACT

These efforts will strengthen the international profile of LSC, enrich students' global learning experiences, foster interdisciplinary competencies, and enhance the attractiveness of LSC for both local and international talent.

HOW SUCCESS WILL BE MEASURED

Objective	KPI
Increase the number of first- and second-cycle students who have gained international experience	30% compared to 2024-2025
Number of students who studied interdisciplinary courses/programmes	50 10 each year starting in 2026





STUDIES: IMPROVEMENT DIRECTIONS

INDIVIDUALIZED STUDIES AND MENTORING

WHY THIS MATTERS

LSC offers opportunities for individualized study paths, active mentorship, and early engagement in research activities across Bachelor's and Master's studies. Its research-driven environment enables students to develop scientific, professional, and transferable skills that support long-term academic and career success.

Building on these strengths, LSC aims to further enhance student engagement, mentorship, and personalized development opportunities, enabling learners to reach their full potential and pursue diverse academic and professional pathways. By fostering a culture of support and continuous development, LSC seeks to strengthen motivation, enrich the learning experience, and prepare future leaders in science, innovation, and industry.



WHAT WE WILL DO

Core focus: strengthening mentorship and flexible, individualized studies

- Strengthen mentorship and support systems across all study levels.
- Expand opportunities for student engagement in research and ensure it is recognized within the study process.
- Enhance academic, professional, and career development support throughout the student journey.
- Foster flexible and individualized learning pathways that support diverse talents, interests, and career aspirations.

EXPECTED IMPACT

These efforts will enhance student engagement and achievement, strengthen personalized learning and development opportunities, and support the growth of highly skilled graduates prepared for successful careers in research, innovation, and industry.

HOW SUCCESS WILL BE MEASURED

Objective	KPI
Number of students who completed their studies on time	BA level >75% MA level >80%
Proportion of students participating in the mentorship program	>10%





COMMUNITY AND ORGANIZATION



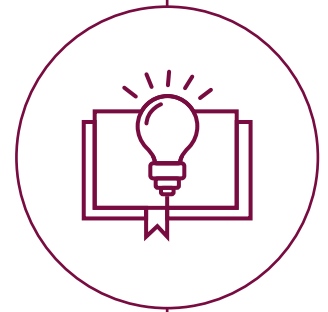
COMMUNITY AND ORGANIZATION: BREAK-THROUGH DIRECTIONS

PERSONNEL POLICY FOR A COMPETITIVE UNIVERSITY

WHY THIS MATTERS

LSC offers excellent conditions for high-level research, supported by advanced infrastructure, internationally recognized expertise, and experience in attracting global talent. Its research environment provides opportunities for scientific excellence, innovation, and international collaboration.

Building on these strengths, LSC aims to further enhance its attractiveness for outstanding researchers, strengthen talent development pathways, and create an environment that enables academic staff to achieve their full research potential. By investing in talent, leadership, and professional development, LSC seeks to reinforce its position as a competitive and internationally connected research institution.



WHAT WE WILL DO

Core focus: attracting talent, improving recruitment and enabling research excellence

- Strengthen international recruitment of academic leaders and emerging talents.
- Enhance talent management, career development, and recruitment practices.
- Expand opportunities for researcher mobility, sabbatical leave, and professional development.
- Implement changes that enable academic staff to dedicate more time to research and innovation.

EXPECTED IMPACT

These efforts will strengthen LSC's ability to attract, develop, and retain outstanding talent, enhance research excellence and productivity, and reinforce its competitiveness within the international research landscape.

HOW SUCCESS WILL BE MEASURED

Objective	KPI
Number of newly recruited	Academic leaders - 4 Young talents - 10
Academic staff who have used sabbatical leave	10%
Reduced teaching workload for academic staff	15%
Number of scientific directions with an expert evaluation of scientific quality score of at least 4	5 out of 6





COMMUNITY AND ORGANIZATION: IMPROVEMENT DIRECTIONS

ENSURING RESILIENCE

WHY THIS MATTERS

As one of the leading life sciences institutions in the region, VU Life Sciences Center operates in a rapidly evolving environment shaped by technological advancement, cybersecurity challenges, laboratory safety requirements, and increasing expectations for institutional preparedness.

By continuously strengthening its safety culture, risk management capabilities, and community preparedness, LSC can ensure a secure, resilient, and uninterrupted environment for studies, research, and innovation. A proactive approach to resilience not only protects people, infrastructure, and knowledge but also reinforces trust among students, employees, partners, and society.



WHAT WE WILL DO

Core focus: creating a safe LSC environment and well-trained resilient LSC community

- Prepare a comprehensive set of trainings and instructions and deliver them in a virtual environment.
- Improve management and monitoring of mandatory safety trainings.
- Update evacuation plans and emergency response procedures.
- Strengthen preparedness for fire and environmental hazards.
- Implement VU cybersecurity requirements.

EXPECTED IMPACT

These efforts will strengthen LSC's resilience to operational disruptions, cyber threats, and emergency situations while ensuring the continuity of academic, research, and institutional activities. They will also foster a safer and more resilient environment, strengthening confidence among students, staff, partners, and other stakeholders.

HOW SUCCESS WILL BE MEASURED

Objective	KPI
Mandatory trainings in virtual environment	100%
Employees completing mandatory safety training on time	≥90%
Fire alarm practical training	Every year
Students and employees prepared to respond to emergencies	≥70%
Updated emergency response procedures	100% coverage





COMMUNITY AND ORGANIZATION: IMPROVEMENT DIRECTIONS

ENGAGING ENVIRONMENT

WHY THIS MATTERS

A modern, functional, and welcoming environment is essential for attracting and retaining talented students, researchers, and staff. Well-designed spaces support learning, collaboration, innovation, and community well-being, while efficient use of infrastructure enables LSC to respond to evolving academic and research needs.

By continuously improving its physical environment and shared facilities, LSC aims to create a campus experience that strengthens engagement, collaboration, and a sense of belonging across the community.



WHAT WE WILL DO

Core focus: improving infrastructure and maximizing the value of LSC spaces

- Upgrade community spaces, including catering and social areas.
- Improve accessibility and inclusiveness across LSC facilities.
- Increase the efficiency of space utilization and planning.
- Transform unused areas into laboratory facilities and offices.

EXPECTED IMPACT

These efforts will enhance the overall campus experience, strengthen collaboration across the LSC community, and ensure that facilities effectively support excellence and future growth in education and research.

HOW SUCCESS WILL BE MEASURED

Objective	KPI
Increased satisfaction with the LSC environment and facilities	20%
Utilization efficiency of teaching and laboratory spaces	Measurement system implemented
Open access approach for unique expensive instruments implemented	50%





COMMUNITY AND ORGANIZATION: IMPROVEMENT DIRECTIONS

EFFECTIVE ORGANIZATION

WHY THIS MATTERS

LSC operates in a rapidly evolving scientific and technological environment. To remain competitive and deliver excellence in research, studies, and innovation, decisions must be supported by reliable data, efficient processes, strategic partnerships, and emerging technologies.

By strengthening digital capabilities, expanding the use of artificial intelligence, and fostering collaboration with academic and industry partners, LSC aims to enhance operational effectiveness and create greater value for students, researchers, and society.



WHAT WE WILL DO

Core focus: advancing digital transformation and data-driven management

- Expand AI applications through collaboration with VU faculties and external partners.
- Contribute to AI innovation initiatives, including AI Factory activities.
- Develop a comprehensive map of LSC research infrastructure and equipment and make it available for researchers.
- Implement real-time monitoring tools for research performance and project management.
- Strengthen strategic partnerships supporting research, studies, and innovation.

EXPECTED IMPACT

These efforts will improve decision-making, increase operational efficiency, strengthen research and innovation performance, and enable LSC to make better use of data, technology, and strategic partnerships to achieve its goals.

HOW SUCCESS WILL BE MEASURED

Objective	KPI
Strategic partnerships supporting LSC goals	≥1 active strategic partnerships
Participation in AI and digital innovation initiatives	100% of LSC deliverables in LitAI on time
Visibility and management of research infrastructure	Research infrastructure and equipment map implemented
Research performance monitoring	Real-time research monitoring system implemented





SOCIETY



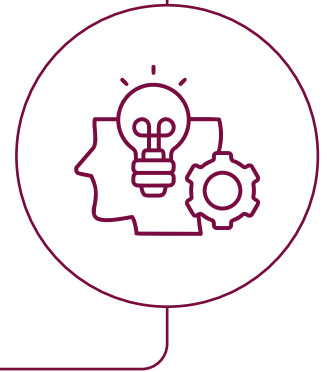
SOCIETY: BREAK-THROUGH DIRECTIONS

UNIVERSITY AS THE THINK TANK FOR THE RESILIENCE OF LITHUANIAN SOCIETY

WHY THIS MATTERS

VU Life Sciences Center brings together internationally recognized expertise in biotechnology, biochemistry, genetics, molecular biology, neuroscience, ecology, and other disciplines that are shaping the future of healthcare, sustainability, and technological advancement.

LSC plays an important role in contributing scientific knowledge, expert insights, and innovative solutions that help address societal challenges and support evidence-based decision-making in Lithuania and beyond.



WHAT WE WILL DO

Core focus: strengthening the contribution of LSC expertise to society

- Showcase LSC's scientific expertise and areas of excellence.
- Strengthen participation in national and international expert networks, advisory boards, and working groups.
- Promote interdisciplinary collaboration to address complex societal challenges.
- Facilitate knowledge exchange between researchers, policymakers, industry, and society.
- Highlight scientific achievements and expert contributions through LSC communication channels.

EXPECTED IMPACT

These efforts will reinforce LSC's position as a leading source of scientific expertise in life sciences, strengthen its contribution to public dialogue and evidence-based decision-making, and increase the societal impact of its research and innovation activities.

HOW SUCCESS WILL BE MEASURED

Objective	KPI
Showcase LSC experts involved in expert groups and advisory bodies	Information available on WEB page
Showcase experts and expertise areas	Information available on WEB page





SOCIETY: IMPROVEMENT DIRECTIONS

RESPONSIBLE ROLE IN EDUCATION

WHY THIS MATTERS

VU Life Sciences Center plays an important role in inspiring future generations of researchers and strengthening life sciences education in Lithuania. Through collaboration with schools, teachers, and learners of all ages, LSC helps bring the latest scientific knowledge into the classroom and encourages interest in life sciences careers.

By sharing its expertise and educational resources, LSC contributes to the development of a scientifically literate society and a stronger pipeline of future students, researchers, and innovators.



WHAT WE WILL DO

Core focus: strengthening life sciences education and inspiring future talent

- Expand educational outreach initiatives, including the „Mobili Bioklasė“ and Didactics Center „BioEduLab“ programme.
- Strengthen collaboration with schools and teachers across Lithuania.
- Foster interest in life sciences among pupils and future students.

EXPECTED IMPACT

These efforts will strengthen LSC's contribution to science education, increase engagement with schools, pupils, and teachers, support teacher development, and inspire more young people to choose studies and careers in life sciences.

HOW SUCCESS WILL BE MEASURED

Objective	KPI
Teachers participating in LSC educational and professional development activities	Annual increase
Partnerships with schools and educational institutions	Annual increase
Reach of LSC educational outreach initiatives among pupils and teachers	Annual increase



APPENDICES AND SUPPORTING MATERIALS

This document presents a high-level strategic framework. Detailed analytical materials and implementation plans are maintained separately and are accessible through internal systems.

Appendix 1: Strategy Implementation Framework 2026-2030

Appendix 2: Strategy Implementation Plan 2026

Appendix 3: Detailed Research Directions Description